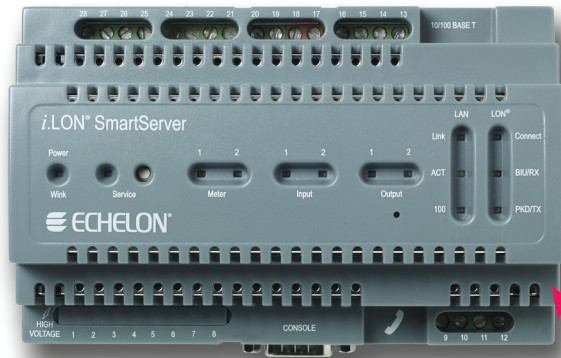




# BACnet Interface for *i.LON*<sup>®</sup> SmartServer

## Datasheet: BCSS01 - BACnet Interface



The LonWorks<sup>®</sup>/BACnet Gateway Application for Echelon's *i.LON*<sup>®</sup> SmartServer

**BACnet/IP Inside**

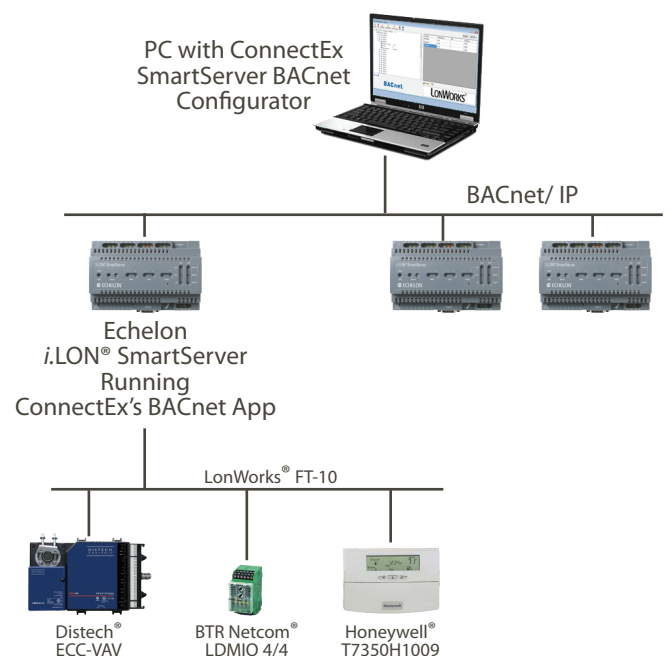
Enabling multi-vendor, multi-protocol solutions by providing a BACnet interface on newly commissioned and/or established LonWorks<sup>®</sup> networks.

- Provides an intuitive BACnet look and feel to any *i.LON*<sup>®</sup> site interface
- Compatible with all common BACnet AWS/OWS workstations
- Simple download to a SmartServer with programmability license
- Implemented as a standard SmartServer App
- Complies with BACnet Interoperability Testing Services, Inc's "BACnet Conformance Test Suite"

## **BACnet Client Now Available!**

### Benefits

- Robust
- User Configurable
- Many template library solutions
- Enables BACnet Read Property and Read Property Multiple
- COV (Change of Value) reporting \*
- Fully discoverable by standard BACnet tools
- Includes BACnet Configurator, BACnet Browser tools for laptop
- Preserves all SmartServer read/write capabilities for LonWorks components
- BACnet Client functionality included



\* 2Q 2013



# Datasheet: BACnet Interface for *i.LON*® SmartServer

## SPECIFICATIONS

### BACnet Interface for the *i.LON*® SmartServer

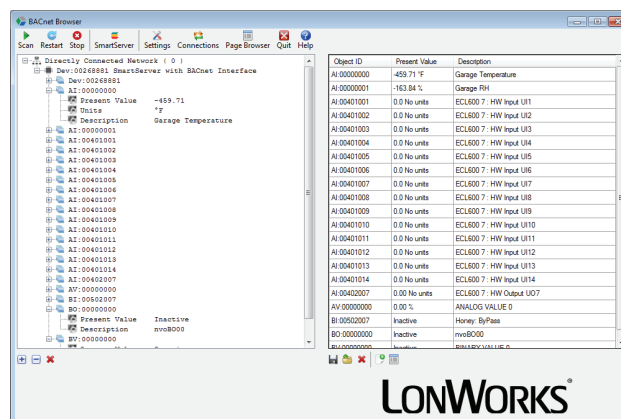
- Requires SmartServer Programmability license (available through Echelon)
- Implemented as a standard SmartServer App
- User Configurable BACnet Server
- User Configurable BACnet Client
- Supports BACnet Client and BACnet Server devices
- Library of BACnet Templates
- 3rd Party Device library continuously updated (e.g. 20, 50, 1000, 5000 point versions)
- Very simple PC based configuration tool provided
- BACnet Support: ASHRAE BACnet 2010
- Communication: BACnet/IP

### BACnet Configurator

- Standalone PC Utility that allows operator to discover BACnet devices
- Allows users to display data points
- Allows user to create page views with user selectable images
- SmartServer to fetch data from BACnet devices
- Allows discovery of *i.LON*® data points as well as BACnet data points
- Allows confirmation of *i.LON*® SmartServer operation and configuration

### PC Requirements for BACnet Browser/Discovery Tool:

- Processor Speed: 400MHz minimum, 1GHz recommended
- RAM: 96 MB minimum, 256 MB recommended
- Minimum Disk Space required: 280 MB (32bit), 610 MB (64 bit)
- Operating Systems: Windows XP (64-bit, 32-bit) and Windows 7 (64-bit, 32-bit)



*i.LON*® and LonWorks® are trademarks of Echelon.



ConnectEx, Inc.

info@connect-ex.com  
Phone: +1 (650) 924 1395  
809B Cuesta Drive, Suite 2180  
Mountain View, CA 94040 USA

www.connect-ex.com