



# Quick Start Guide

## SmartServer BACnet Configurator

### Step 1

Start the application and create a new user

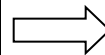
**Login**

User Email

Password

Remember my email address

Remain Logged In



**Create New User**

Email

Password

Organization

Remember my email address

Remain Logged In

Email me if there is an update

Email me information about other products

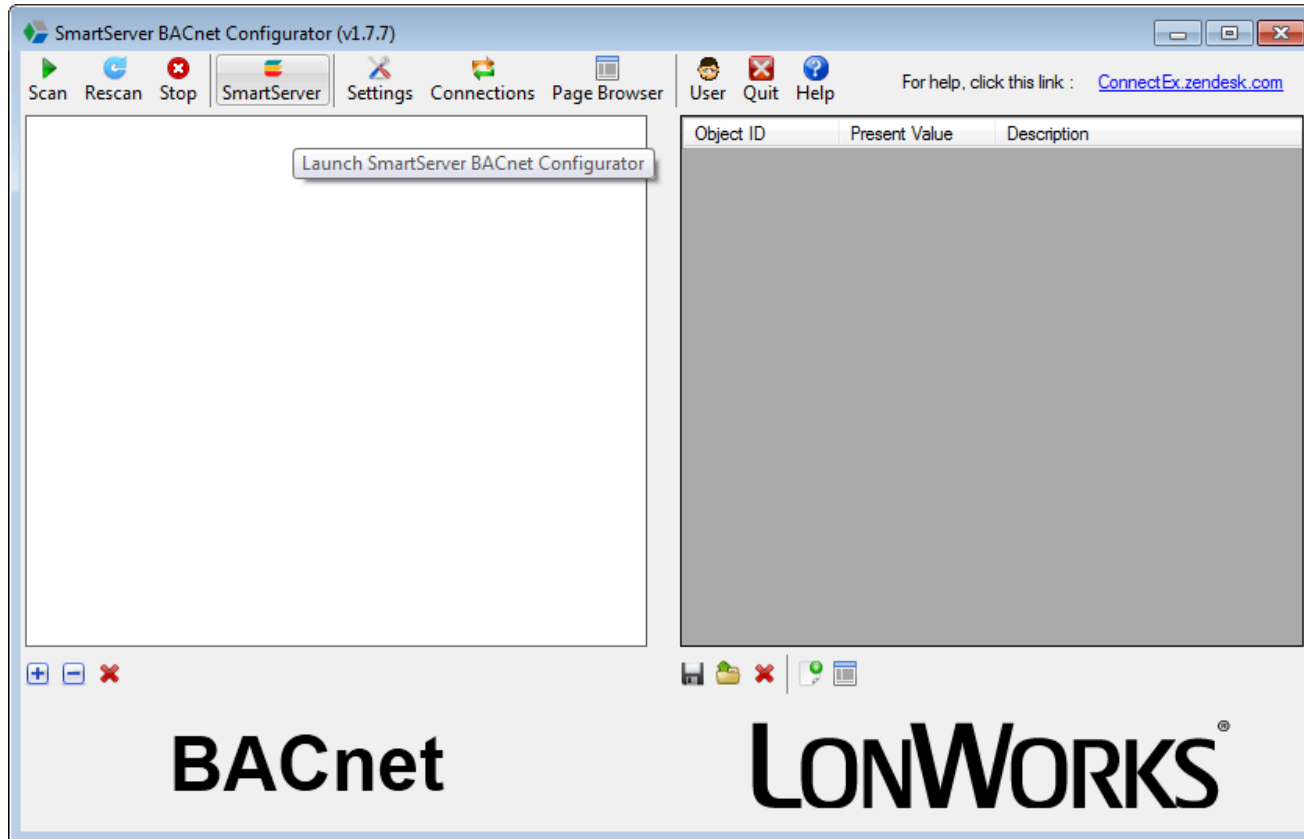


# Quick Start Guide

## SmartServer BACnet Configurator

Click on the SmartServer button

Step 2





# Quick Start Guide

## SmartServer BACnet Configurator

### Step 3

Enter your SmartServer's IP address, username and password and click "Connect"

The screenshot shows the SmartServer BACnet Configurator application window. It is divided into several sections:

- Connection Settings:** Includes fields for SmartServer IP Address (192.168.1.222), SmartServer Username (ilon), and SmartServer Password (masked with asterisks). There are buttons for "Connected" and "Clear Logins".
- Device Settings:** Includes fields for SmartServer Name (SmartServer with SmartServer Interface), BACnet App Instance (260001), and License Status (Not Authorized). There are buttons for "Update" and "Authorize".
- Point Discovery:** Includes a Search field (nvo), buttons for "Discover" and "Discover All", and a "Found Variables" dropdown menu.
- Point Configuration:** Includes a "Current Configuration:" field and a toolbar with icons for Open, New, Select, Modify, Save, Save As, Fetch, Send, Browse, and Restart.

A "Close" button is located at the bottom right of the window.

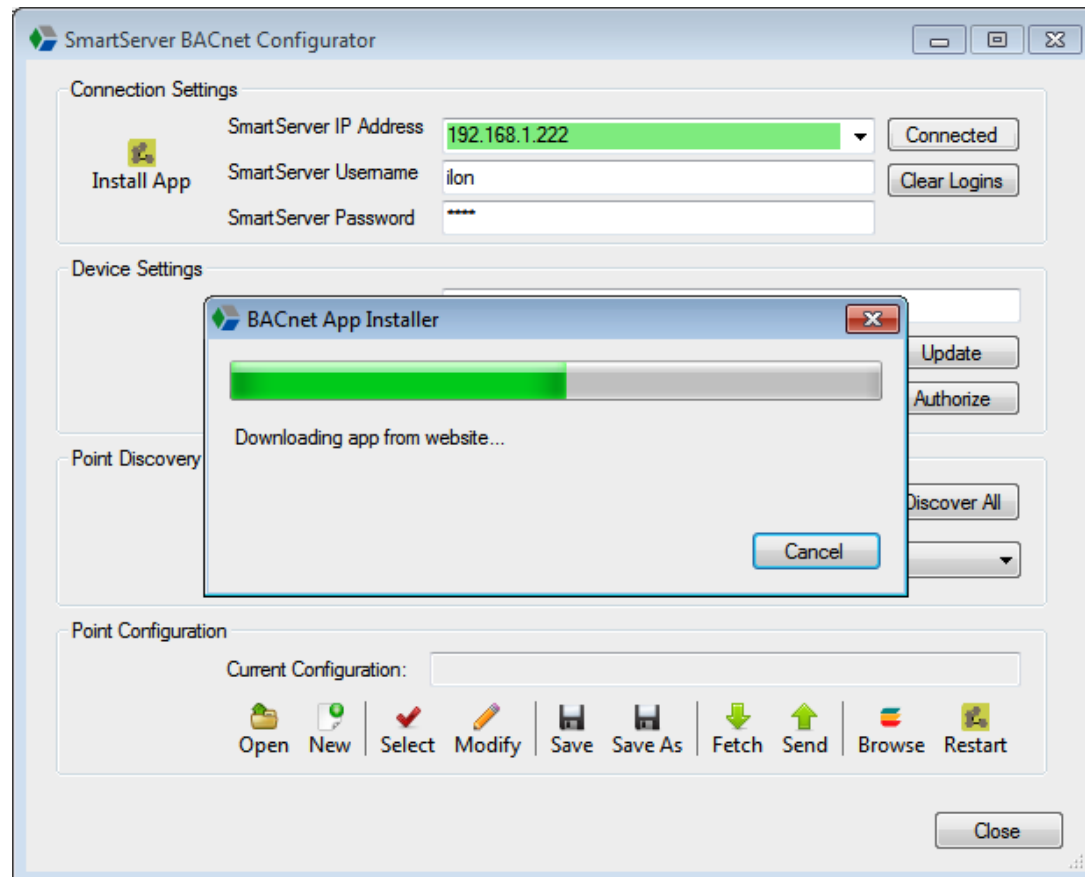


# Quick Start Guide

## SmartServer BACnet Configurator

Click on the “Install App” button and follow the prompts on screen

Step 4





# Quick Start Guide

## SmartServer BACnet Configurator

### Step 5

Commission the driver using the SmartServer web interface\*

The screenshot shows the i.LON SmartServer web interface. At the top, there is a navigation bar with tabs for SETUP, VIEW, SETTINGS, HELP, and LOG OFF. Below this, the main title is "Configure - Channel". On the left, there is a "Select Channels" sidebar with a tree view showing LAN, SmartServer, Remote Access, Net, LON, MB485, MBTCP, VirtCh, and several time-related URLs. The "General" radio button is selected. In the center, an "Add Device" dialog box is open, showing a table of properties and a file selection tree.

Property	Value
Name	Net/LON/ BACnetApp
File Name	/root/lonWorks/Import/ConnectEx/BACnetS20.xif
Location	<input type="radio"/> External <input checked="" type="radio"/> Internal
Select	<ul style="list-style-type: none"><li>LonMark (XIF)<ul style="list-style-type: none"><li>/root/lonWorks/Import/Echelon/iLON100/</li><li>/root/lonWorks/Import/Honeywell/</li><li>/root/lonWorks/Import/Distech/</li><li>/root/lonWorks/Import/BTR/</li><li>/root/lonWorks/Import/ConnectEx/<ul style="list-style-type: none"><li>BACnetS20</li></ul></li></ul></li><li>Template</li></ul>

\*For assistance with commissioning, please contact an Echelon product specialist



# Quick Start Guide

## SmartServer BACnet Configurator

**Support:**

For assistance with the SmartServer BACnet Configurator, please go to our [support site](#).

**Additional Contact Information:**

ConnectEx, Inc.

809B Cuesta Drive

Suite 2180

Mountain View, CA 94040 USA

Phone: +1 (650) 924 1395

Email: [info@connect-ex.com](mailto:info@connect-ex.com)

Web: [www.connect-ex.com](http://www.connect-ex.com)